

## SPECIFICATION SHEET | PREMO CPAP



### THE F&P ICON™ PREMO DELIVERS:

- ThermoSmart™ Technology for more humidity and comfort
- InfoSmart™ Technologies for comprehensive data communication options

### PLUS

- Contemporary and stylish design for any bedroom
- Intuitive one-touch navigation with the SmartDial™
- Clock and customizable AlarmTunes™
- Fully integrated design, less fuss and more functionality!



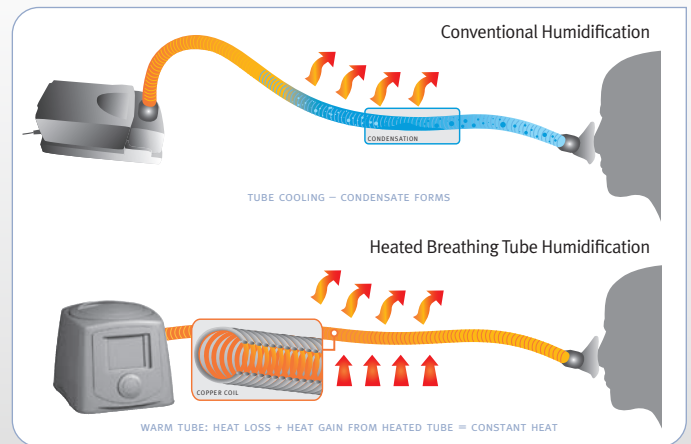
## Designed for Life

The F&P ICON™ has been designed from the outside-in to answer the strong call for a contemporary, compact CPAP that blends seamlessly into any bedroom environment, helping to break down some of the traditional resistance associated with CPAP therapy. Inside the F&P ICON™ is a comprehensive set of intelligent technologies, integrated into one stylish solution to deliver new levels of therapy, while effectively meeting your business needs.



### More humidity. Less discomfort.

ThermoSmart™ Technology includes an advanced humidification algorithm and a heated breathing tube, which both work to provide optimal humidity and reduce condensation. Patients will benefit from higher levels of humidity<sup>1</sup> for improved comfort<sup>2,3</sup> and a clinically proven better night's sleep.<sup>3</sup>



### More communication. Less guesswork.

Retrieving compliance data in a timely and efficient manner is crucial to improving patient outcomes and achieving business success. The F&P ICON™ provides a range of solutions to suit varied business needs.

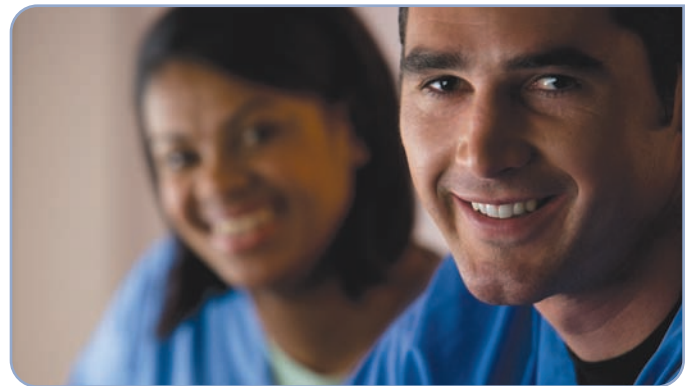
#### Data Communication

- Telephone reporting: The patient can relay sleep data from the display screen of the device, which can then be verified using the F&P InfoSmart™ software
- SmartStick™: Data download and setting adjustments can be made within F&P InfoSmart™ via the SmartStick™.

#### Data Reporting

The SmartStick™ utilizes USB technology, which provides large data storage capacity. The F&P InfoSmart™ software provides a range of options to report the data to meet your needs:

- 7 days' high-frequency Flow, Pressure and Leak data (50 Hz)
- 30 days' detailed efficacy data (includes AHI, Pressure and Leak)
- 365 days of summary efficacy data
- Cumulative summary data from first use
- Database management features such as alerts, filtering and customization.



## FOCUS ON FEATURES

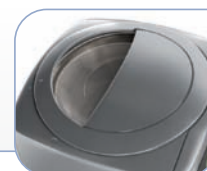


### Elbow

Used to connect a ThermoSmart™ or standard Breathing Tube to the device. The Elbow also rotates for a preferred position.

### Water Chamber

One-piece chamber. Holds 420 ml of water and is dishwasher safe.



### Chamber Lid

Must be correctly fitted for optimal pressure delivery and can also be used as a handle to carry the device.

### Menu System

The Home Screen with a clock is the default display. Each point of the clock-face represents the available settings.



### SmartStick™ / USB Port

The USB Port houses the SmartStick™ to record patient compliance, efficacy and flow data.

### SmartDial™

Intuitive controls allow one-touch navigation of the Menu System, using a Press, Turn, Press principle.



### Air Filter

Ensures the air is filtered from particles and dust.

# PREMO CPAP | FEATURES

## THE F&P ICON™ PREMO

INCLUDED WITH THE F&P ICON™	REPLACEMENT PARTS	PRODUCT SPECIFICATIONS																																									
<ul style="list-style-type: none"> <li>Premo CPAP with InfoSmart™ and ThermoSmart™ Technologies</li> <li>1 x Carry-case</li> <li>1 x Water Chamber</li> <li>1 x Chamber Lid</li> <li>1 x ThermoSmart™ Breathing Tube</li> <li>1 x SmartStick™</li> <li>1 x SmartStick™ Mailer</li> <li>4 x Multi-power plugs for universal use</li> <li>1 x Use and Care Manual</li> <li>1 x F&amp;P ICON™ Support Tools CD</li> <li>2 x Air Filters</li> </ul>	<table border="1"> <tr> <td>F&amp;P InfoSmart™ CD</td> <td>900ICON100</td> </tr> <tr> <td>Water Chamber</td> <td>900ICON200</td> </tr> <tr> <td>SmartStick™</td> <td>900ICON202</td> </tr> <tr> <td>Elbow</td> <td>900ICON204</td> </tr> <tr> <td>Outlet Seal</td> <td>900ICON206</td> </tr> <tr> <td>ThermoSmart™ Breathing Tube</td> <td>900ICON208</td> </tr> <tr> <td>Breathing Tube</td> <td>900ICON210</td> </tr> <tr> <td>Air Filter</td> <td>900ICON212</td> </tr> <tr> <td>Auto/Premo Lid</td> <td>900ICON214</td> </tr> <tr> <td>Novo Lid</td> <td>900ICON216</td> </tr> <tr> <td>Filter Grill</td> <td>900ICON218</td> </tr> <tr> <td>Multi-region Plug Pack</td> <td>900ICON302</td> </tr> <tr> <td>Carry-case Straps</td> <td>900ICON306</td> </tr> <tr> <td>Carry-case</td> <td>900ICON308</td> </tr> <tr> <td>Use and Care Manual</td> <td>185045354</td> </tr> <tr> <td>Healthcare Provider Manual</td> <td>185045357</td> </tr> </table>	F&P InfoSmart™ CD	900ICON100	Water Chamber	900ICON200	SmartStick™	900ICON202	Elbow	900ICON204	Outlet Seal	900ICON206	ThermoSmart™ Breathing Tube	900ICON208	Breathing Tube	900ICON210	Air Filter	900ICON212	Auto/Premo Lid	900ICON214	Novo Lid	900ICON216	Filter Grill	900ICON218	Multi-region Plug Pack	900ICON302	Carry-case Straps	900ICON306	Carry-case	900ICON308	Use and Care Manual	185045354	Healthcare Provider Manual	185045357	<p><b>Dimensions</b> 6.3 x 6.7 x 8.7 in (160 x 170 x 220 mm)</p> <p><b>Weight</b> 4.8 lb (2.2 kg) Packed Weight: 8.7 lb (4.0 kg)</p> <p><b>Performance</b> Pressure Range: 4 to 20 cmH<sub>2</sub>O</p> <p><b>Noise Level</b> &lt; 30 dBA</p> <p><b>Standards Compliance</b> IEC60601-1: 1998, AS/NZS 3200.1.0: 1998, EN60601-1: 1990</p> <p><b>SmartStick™ Data Recording</b> The SmartStick™ records up to 365 days of summary compliance and efficacy data, 30 days of detailed efficacy data (AHI, Pressure, Leak), 7 days of high frequency Flow, Pressure and Leak data (50 Hz), as well as cumulative data from first use.</p> <p><b>Electrical Ratings</b></p> <table border="1"> <thead> <tr> <th>RATED SUPPLY VOLTAGE</th> <th>RATED CURRENT INPUT</th> <th>RATED SUPPLY FREQUENCY</th> </tr> </thead> <tbody> <tr> <td>110-115 V</td> <td>1.27 A (1.43 A Max)</td> <td>50-60 Hz / 400 Hz</td> </tr> <tr> <td>220-240 V</td> <td>1.07 A (1.21 A Max)</td> <td>50-60 Hz</td> </tr> </tbody> </table>	RATED SUPPLY VOLTAGE	RATED CURRENT INPUT	RATED SUPPLY FREQUENCY	110-115 V	1.27 A (1.43 A Max)	50-60 Hz / 400 Hz	220-240 V	1.07 A (1.21 A Max)	50-60 Hz
F&P InfoSmart™ CD	900ICON100																																										
Water Chamber	900ICON200																																										
SmartStick™	900ICON202																																										
Elbow	900ICON204																																										
Outlet Seal	900ICON206																																										
ThermoSmart™ Breathing Tube	900ICON208																																										
Breathing Tube	900ICON210																																										
Air Filter	900ICON212																																										
Auto/Premo Lid	900ICON214																																										
Novo Lid	900ICON216																																										
Filter Grill	900ICON218																																										
Multi-region Plug Pack	900ICON302																																										
Carry-case Straps	900ICON306																																										
Carry-case	900ICON308																																										
Use and Care Manual	185045354																																										
Healthcare Provider Manual	185045357																																										
RATED SUPPLY VOLTAGE	RATED CURRENT INPUT	RATED SUPPLY FREQUENCY																																									
110-115 V	1.27 A (1.43 A Max)	50-60 Hz / 400 Hz																																									
220-240 V	1.07 A (1.21 A Max)	50-60 Hz																																									

## F&P ICON™ Models and Features Matrix

PERFORMANCE FEATURES	AUTO	PREMO	NOVO
Fully Integrated CPAP with Humidification	•	•	•
ThermoSmart™ Heated Breathing Tube	•	•	•
Auto-Adjusting Pressure	•		
Efficacy Reporting (Includes AHI and Leak)	•	•	
Compliance Reporting	•	•	•
SmartStick™ Removable Media	•	•	•
SensAwake™ Pressure Relief Technology	•		
Proportional Ramp	•	•	•
Altitude Adjusting	Automatic	Automatic	Manual
Leak Compensation	•	•	
Clock and AlarmTunes™ Function	•	•	•
InfoSmart™ Technologies	Advanced	Advanced	Basic

**Manufacturer** Fisher & Paykel Healthcare Ltd, 15 Maurice Paykel Place, East Tamaki, Auckland 2013, PO Box 14 348, Panmure, Auckland 1741, New Zealand  
Tel: +64 9 574 0100 Fax: +64 9 574 0158 Email: info@fphcare.com Web: www.fphcare.com

**Australia** Tel: +61 3 9879 5022 Fax: +61 3 9879 5232 **Austria** Tel: 0800 29 31 23 Fax: 0800 29 31 22 **Benelux** Tel: +31 40 216 3555 Fax: +31 40 216 3554 **China** Tel: +86 20 3205 3486 Fax: +86 20 3205 2132  
**France** Tel: +33 1 6446 5201 Fax: +33 1 6446 5221 **Germany** Tel: +49 7181 98599 0 Fax: +49 7181 98599 66 **India** Tel: +91 80 4123 6041 Fax: +91 80 4123 6044 **Irish Republic** Tel: 1800 409 011  
**Italy** Tel: +39 06 7839 2939 Fax: +39 06 7814 7709 **Japan** Tel: +81 3 3661 7205 Fax: +81 3 3661 7206 **Northern Ireland** Tel: +0800 132 189 **Spain** Tel: +34 902 013 346 Fax: +34 902 013 379  
**Sweden** Tel: +46 8 564 76 680 Fax: +46 8 36 63 10 **Switzerland** Tel: 0800 83 47 63 Fax: 0800 83 47 54 **Taiwan** Tel: +886 2 8751 1739 Fax: +886 2 8751 5625  
**UK (EU Authorised Representative)** Fisher & Paykel Healthcare UK Ltd, Unit 16, Cordwallis Park, Clivemont Road, Maidenhead, Berkshire SL6 7BU, UK Tel: +44 1628 626 136 Fax: +44 1628 626 146  
**USA** Tel: +1 800 446 3908 or +1 949 453 4000 Fax: +1 949 453 4001